

This iAd  
s

# Church steeple of Ada

**Can you identify them?**

Here's your chance to try  
Photos by Monty Siekerman

# Here's how this works

We've provided  
photos of nine Ada  
church steeples.

See how many you can  
identify correctly. Each  
is numbered. The  
answers are on the last  
page.

After looking at the  
steeples, as a bonus, try  
to name the two Ada  
churches that don't have  
steeples.

Good luck!



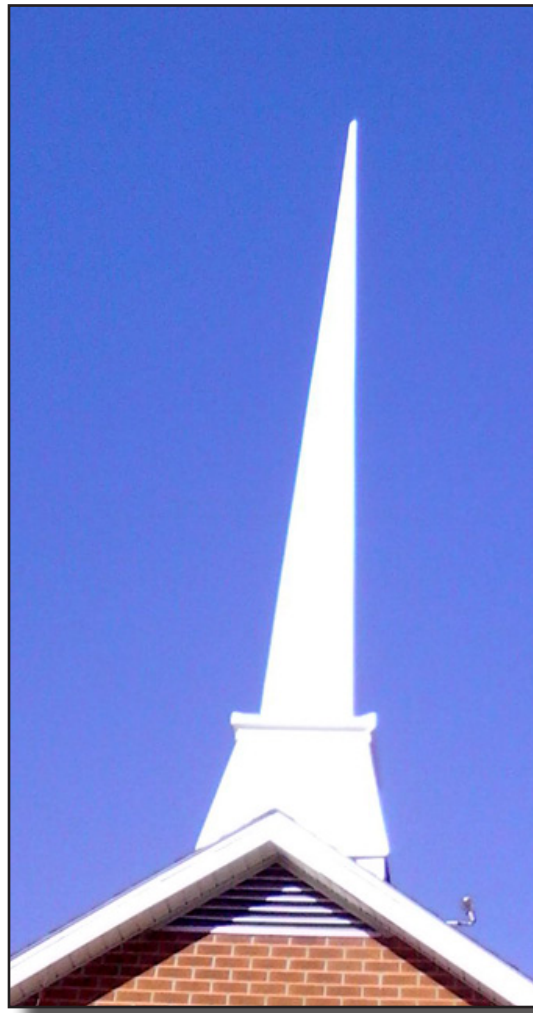
**Steeple 1**



**Steeple 2**



**Steeple 3**



**Steeple 4**



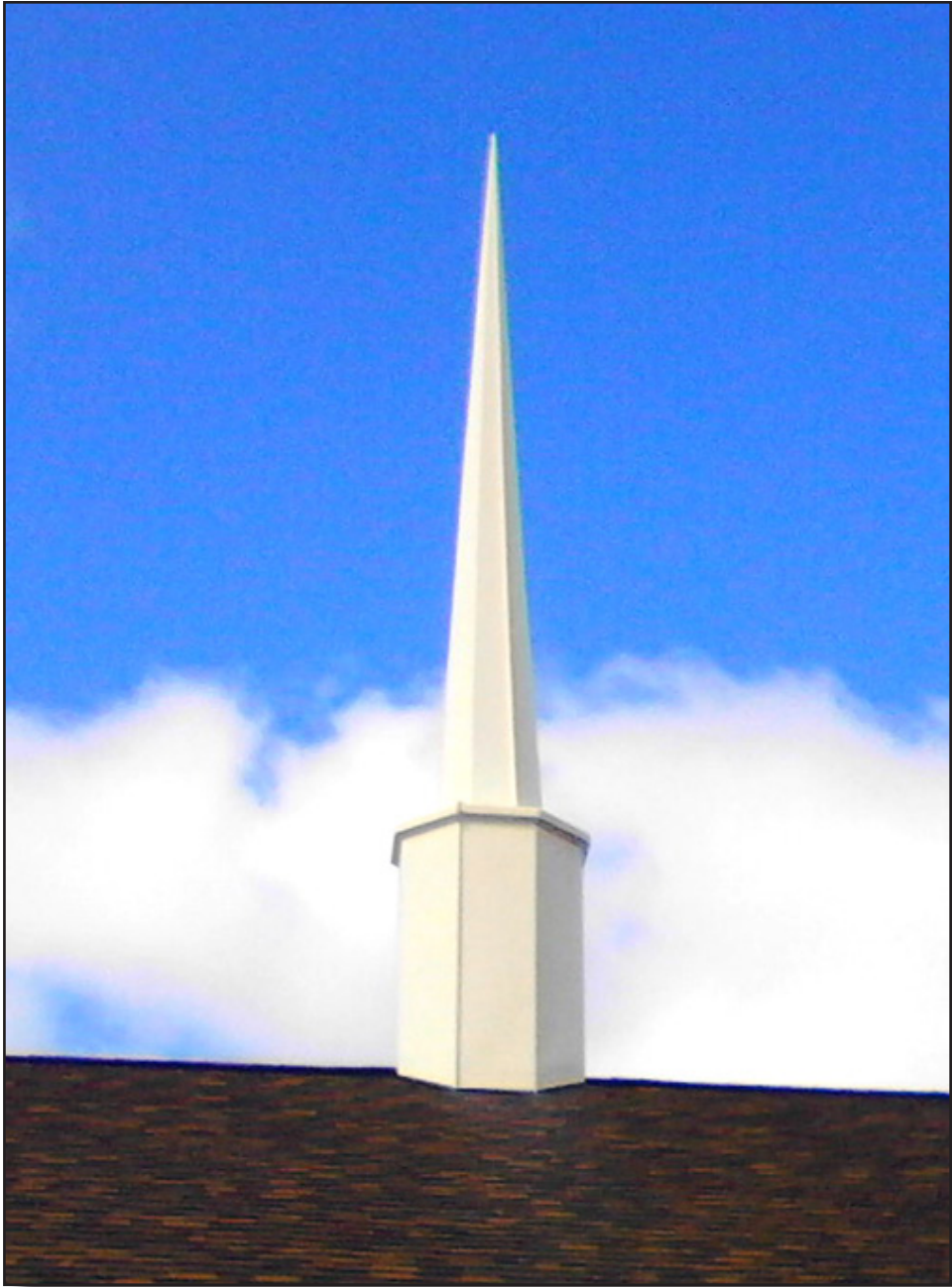
**Steeple 5**



**Steeple 6**



**Steeple 7**



**Steeple 8**



**Steeple 9**

# How did you do?

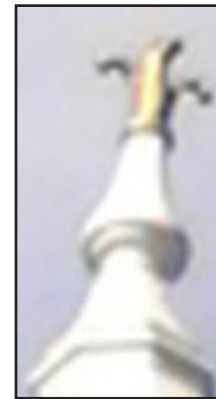
## Answers:

- Steeple 1 - Sugar Grove United Methodist
- Steeple 2 - First United Methodist
- Steeple 3 - First Presbyterian
- Steeple 4 - Grace Gospel Church
- Steeple 5 - Ada Full Gospel Church
- Steeple 6 - ONU Chapel
- Steeple 7 - Our Lady of Lourdes
- Steeple 8 - First Baptist Church
- Steeple 9 - Church of Christ (Disciples)

## Bonus:

*Churches with no steeples:*

- 1 - St. Mark's Lutheran Church
- 2 - Liberty Baptist Church



# Now the tough part...

Identify the church only by the cross.

**Answers: top, left to right:** First United Methodist, Sugar Grove, First Baptist, Full Gospel  
**Second from left:** Church of Christ (Disciples), Presbyterian  
**Bottom from left:** Lady of Lourdes, Grace Gospel, ONU Chapel